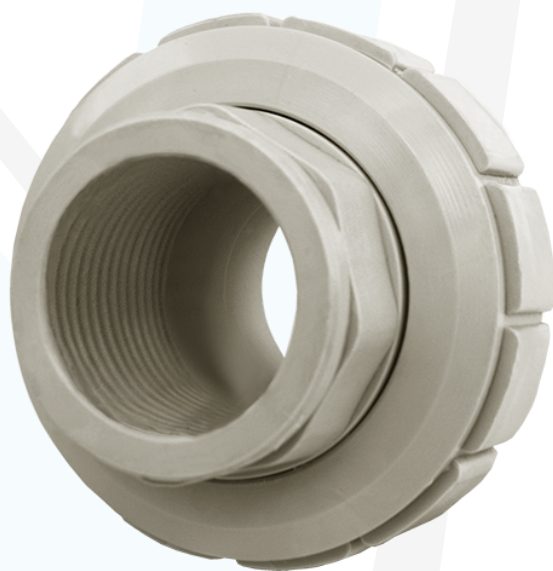
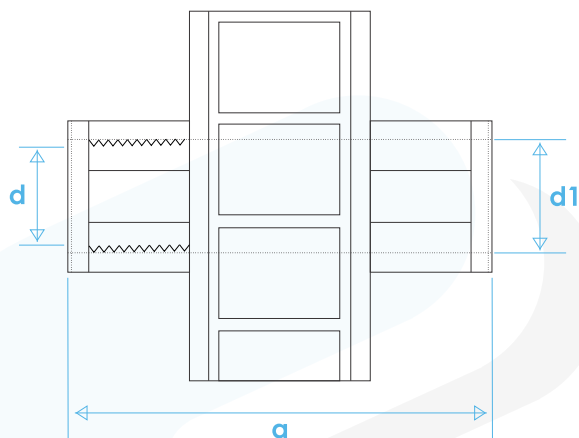


Tuerca unión mixta - PP C-10

dimensiones en mm
derechos reservados a Valtic, s.a. de c.v.

MEDIDA	d	d1	a
1/2"	1/2"	20.5	51.2
3/4"	3/4"	25.9	61.6
1"	1"	32.7	71.3
1 1/4"	1 1/4"	41.1	99.4
1 1/2"	1 1/2"	47.2	99.4
2"	2"	59.3	100.1



VALTIC, S.A. DE C.V.

FABRICANTE DE TUBERIA DE POLIETILENO Y PROLIPROPILENO

