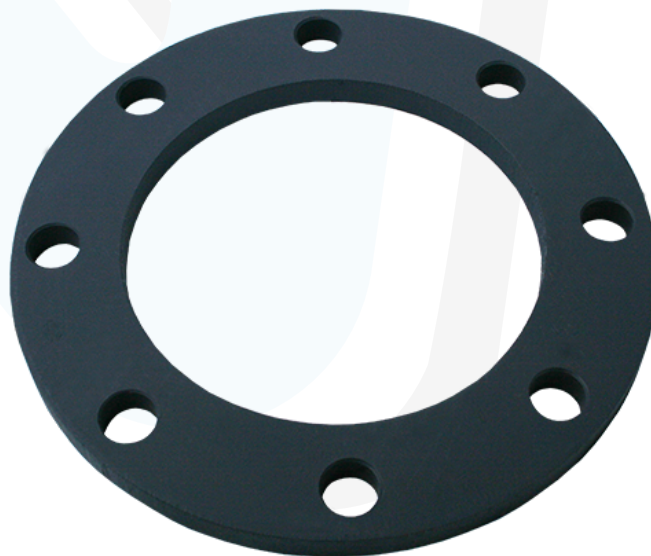
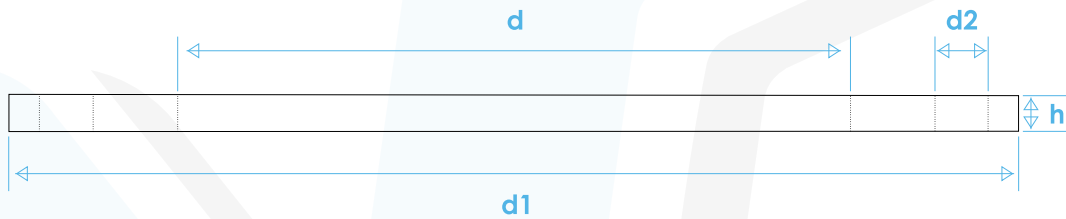


Contrabrida de acero al carbón

dimensiones en mm
derechos reservados a Valtic, s.a. de c.v.

MEDIDA	d	d1	h		d2	Num. Barrenos
			Hasta 150 Psi	Hasta 270 Psi		
1/2"	25.4	88.9	12.7	15.8	15.8	4
3/4"	28.1	97.5	12.7	15.8	15.8	4
1"	36.5	107.9	12.7	15.8	15.8	4
1 1/4"	44.4	117.4	12.7	15.8	15.8	4
1 1/2"	57.1	127.0	12.7	15.8	15.8	4
2"	73.0	152.4	12.7	15.8	19.0	4
2 1/2"	85.7	177.8	12.7	15.8	19.0	4
3"	101.6	190.5	12.7	15.8	19.0	4
4"	127.0	228.6	12.7	15.8	19.0	8
6"	180.9	279.4	15.8	19.0	22.2	8
8"	231.7	342.9	15.8	19.0	22.2	8
10"	285.7	406.4	15.8	19.0	25.4	12
12"	336.5	482.6	19.0	22.2	25.4	12
14"	360.3	533.4	22.2	31.7	31.7	12



VALTIC, S.A. DE C.V.

FABRICANTE DE TUBERIA DE POLIETILENO Y PROLIPROPILENO

